



"Reengineering traditional & indigenous
design, materials, and construction
practices"

2nd International Conference and Exhibition ANGAN 14th – 16th
September 2022

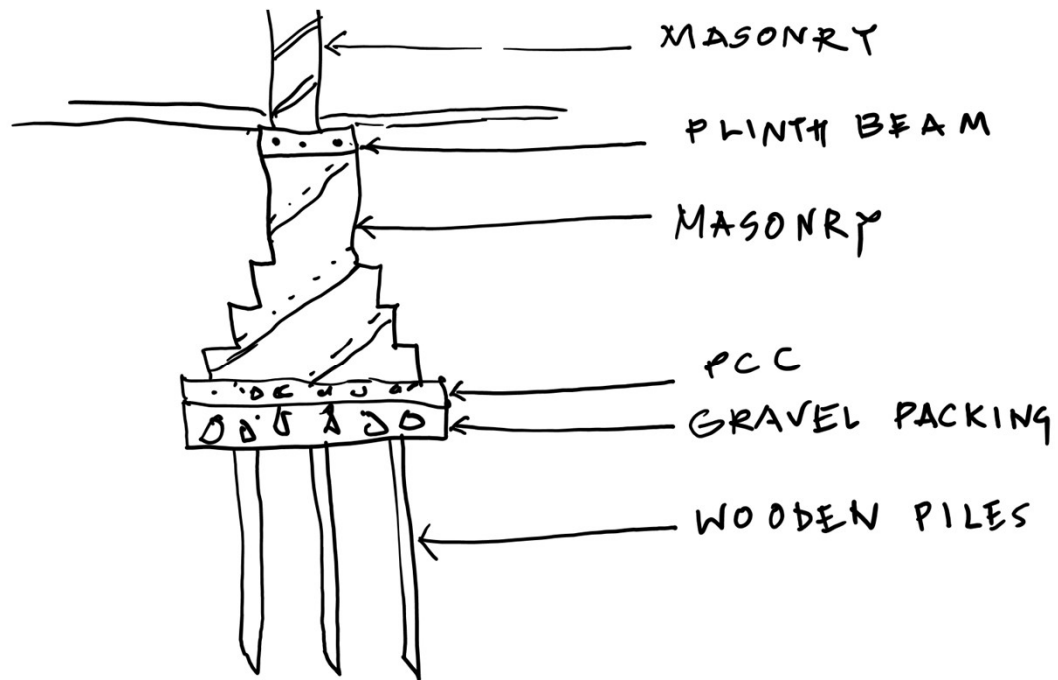
FOUNDATIONS:

- TYPICALLY FOUNDATIONS COST 7-10% OF THE TOTAL BUILDING COSTS.
- FOUNDATIONS ARE 25 % OF MASONRY COSTS IN A LOAD BEARING MASONRY CONSTRUCTION.
- TYPE OF FOUNDATION ADOPTED DEPENDS UPON THE SOIL STRATA.

WOODEN PILES



THESE ARE USED IN SOFT SOILS WITH LOW SBC. TREATED WOODEN PILES DRIVEN INTO THE GROUND. THEY DENSIFY THE SOIL REDUCING LONG TERM SETTLEMENT OF STRUCTURES.

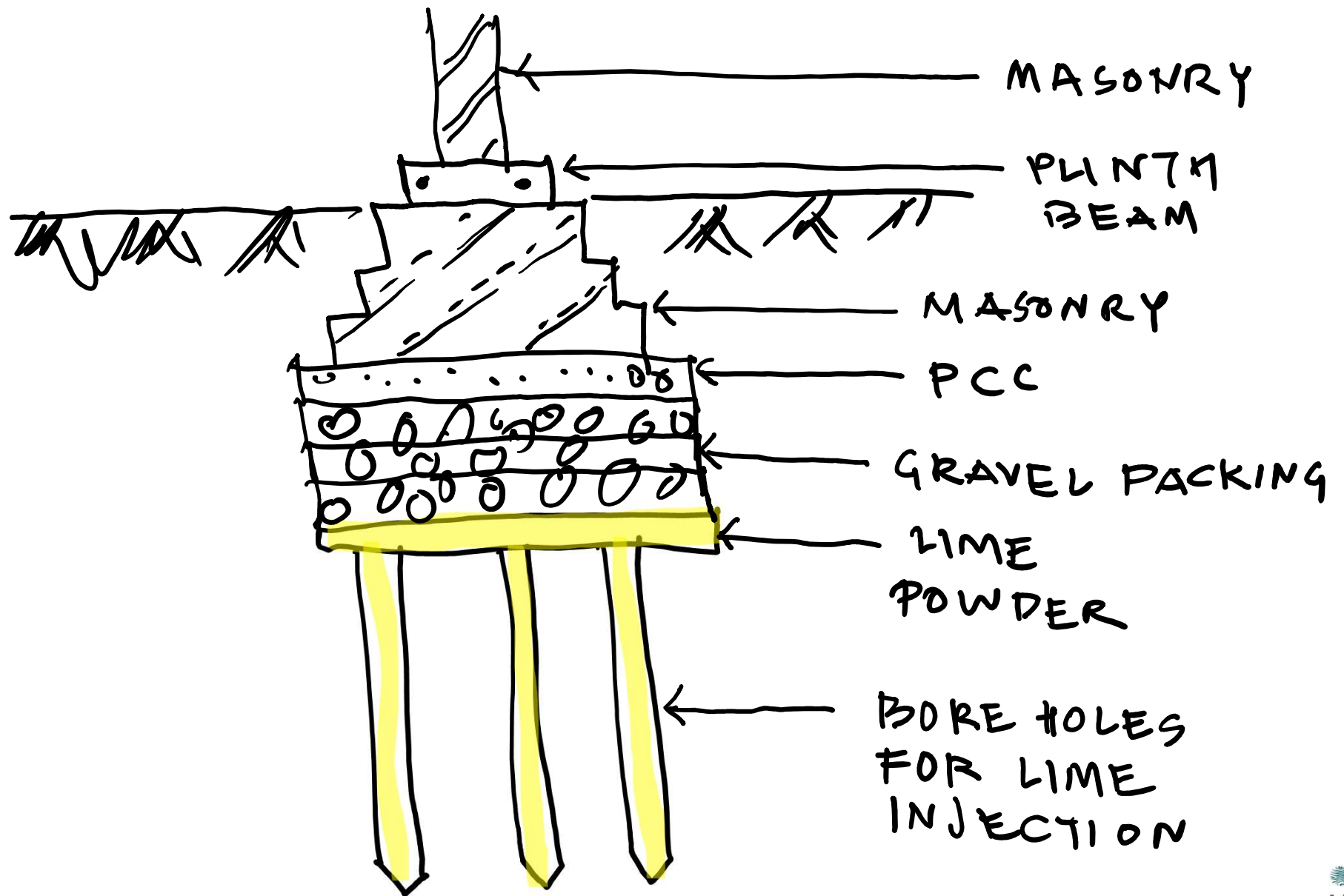




LIME PILES



LIME PILE :
IN SUB SOILS
CONSISTING OF
SANDY CLAY OF AN
EXPANSIVE NATURE.
INJECT LIME INTO
THE SOIL TILL HARD
STRATA. REDUCES
FLUCTUATION OF
WATER CONTENT.
ANY MASONRY
ABOVE TO SUPPORT
LOAD BEARING
CONSTRUCTION

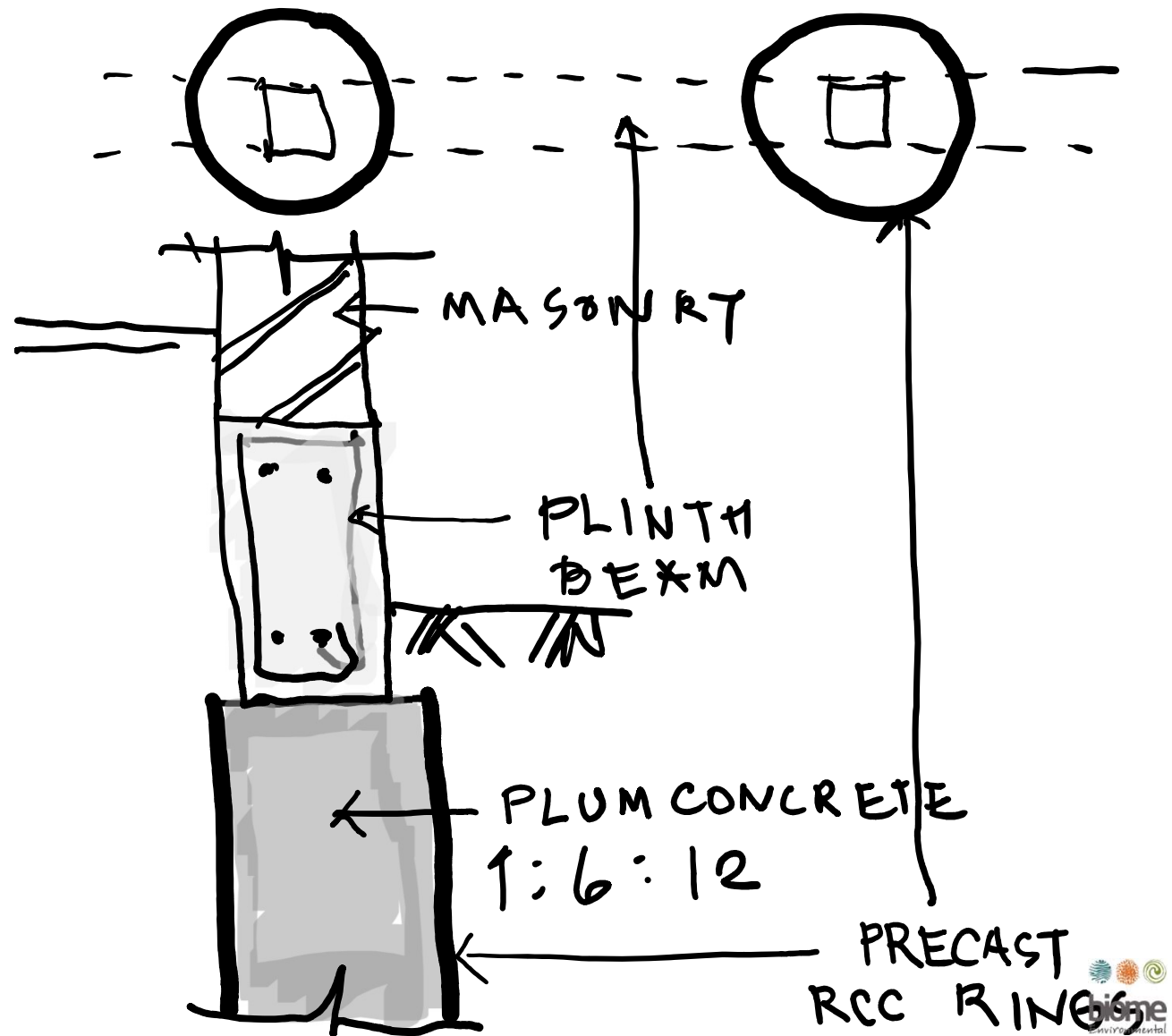
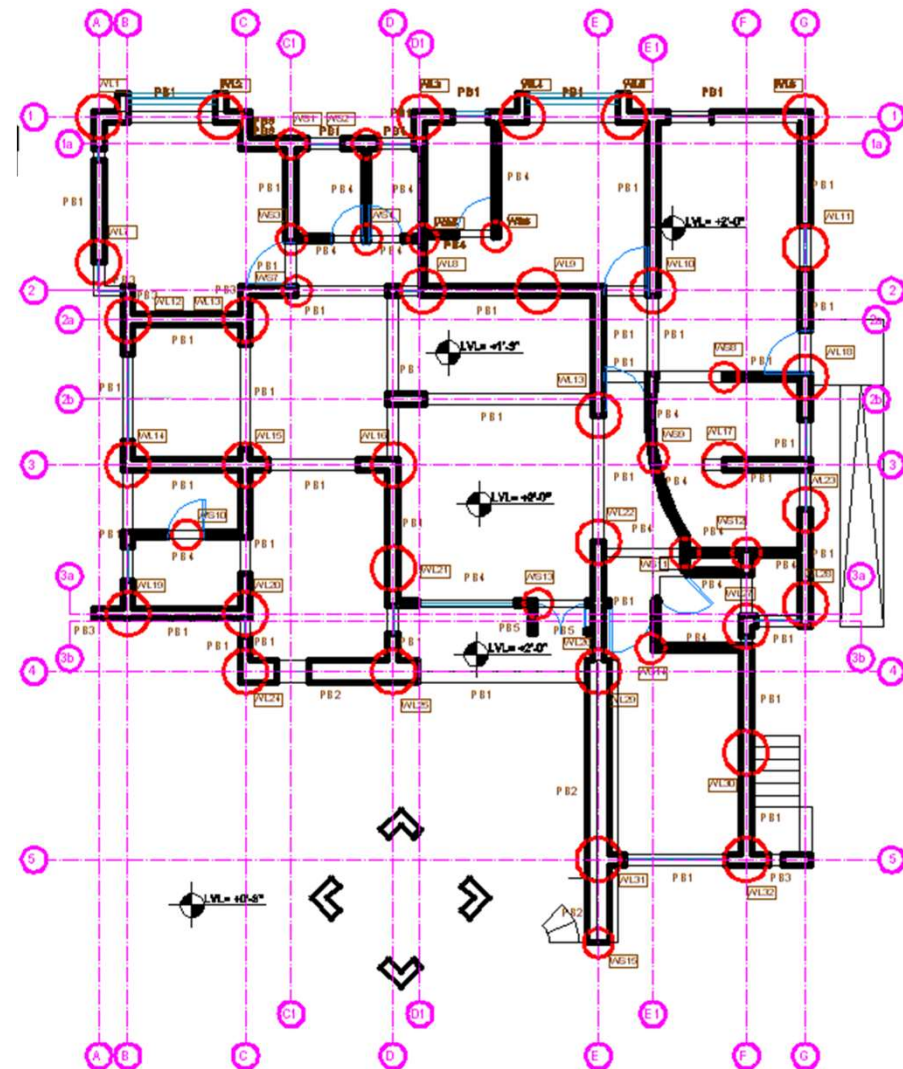




WELL FOUNDATIONS



UNREINFORCED PILE FOUNDATION.THE SUNK WELLS ARE FILLED WITH LEAN CONCRETE .

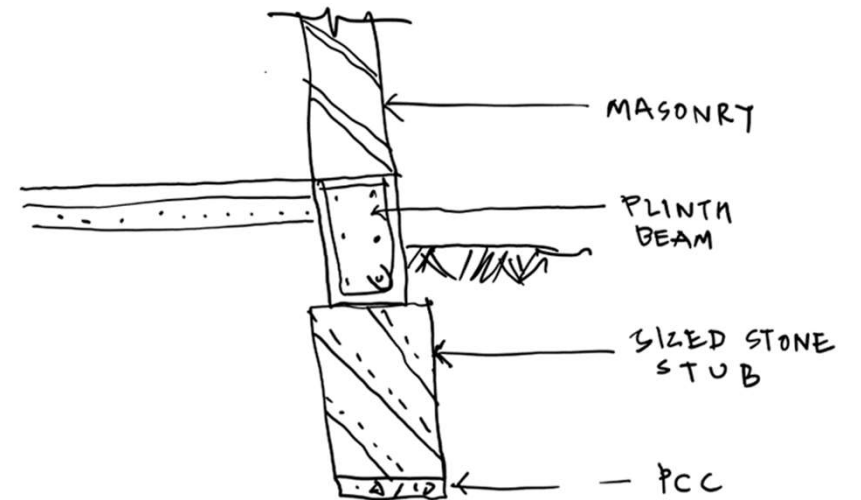
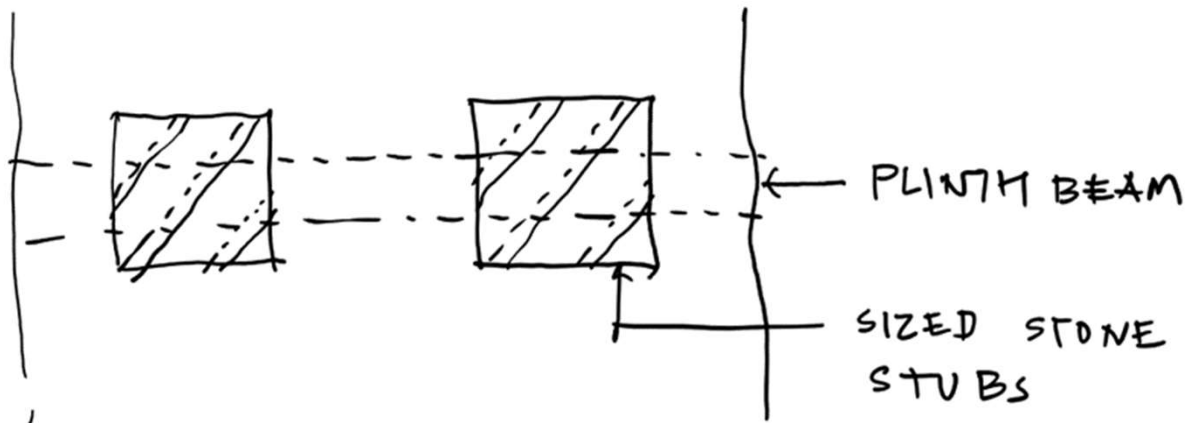




STUB FOUNDATION

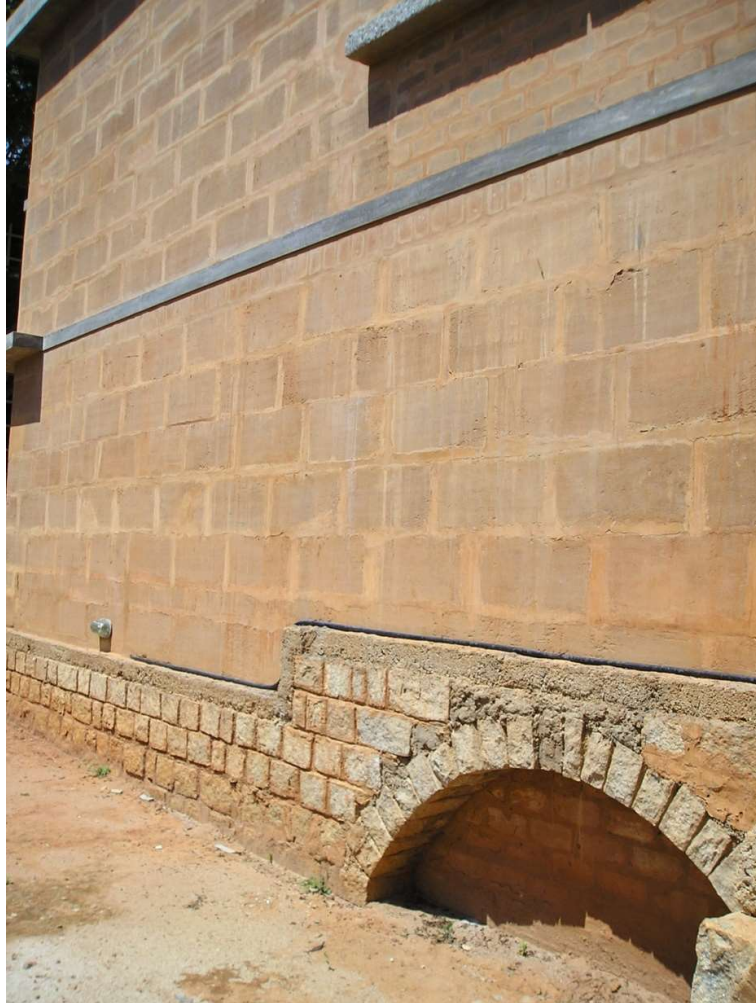


THIS TYPE OF FOUNDATION IS SUITABLE ON SOILS WITH HIGH SAFE BEARING CAPACITY.

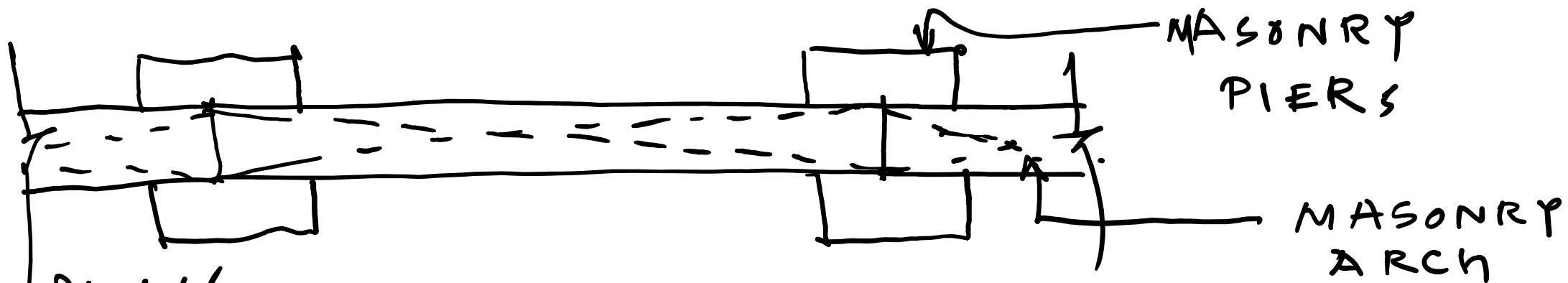




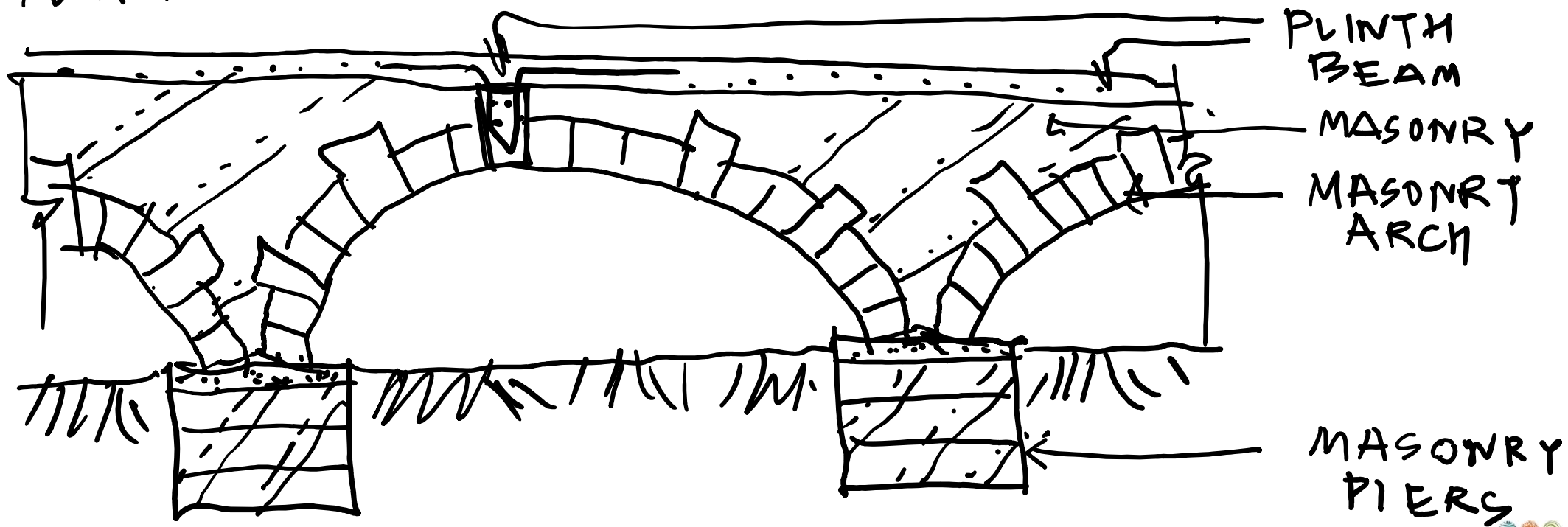
ARCH FOUNDATIONS



SUITABLE FOR HARD SOILS.
THIS METHOD OF
FOUNDATION GREATLY
REDUCES THE MATERIALS
USED ESPECIALLY IN A
SLOPING LAND.



PLAN



SECTION



RAMMED EARTH FOUNDATIONS



ON SOILS WITH GOOD
SBC.
NO PCC NEEDED TO BEGIN
THE FOUNDATION.
SAME MATERIAL USED
FOR ALL PURPOSES—
EARTH FROM
FOUNDATION TILL THE
ROOF IS A POSSIBILITY.

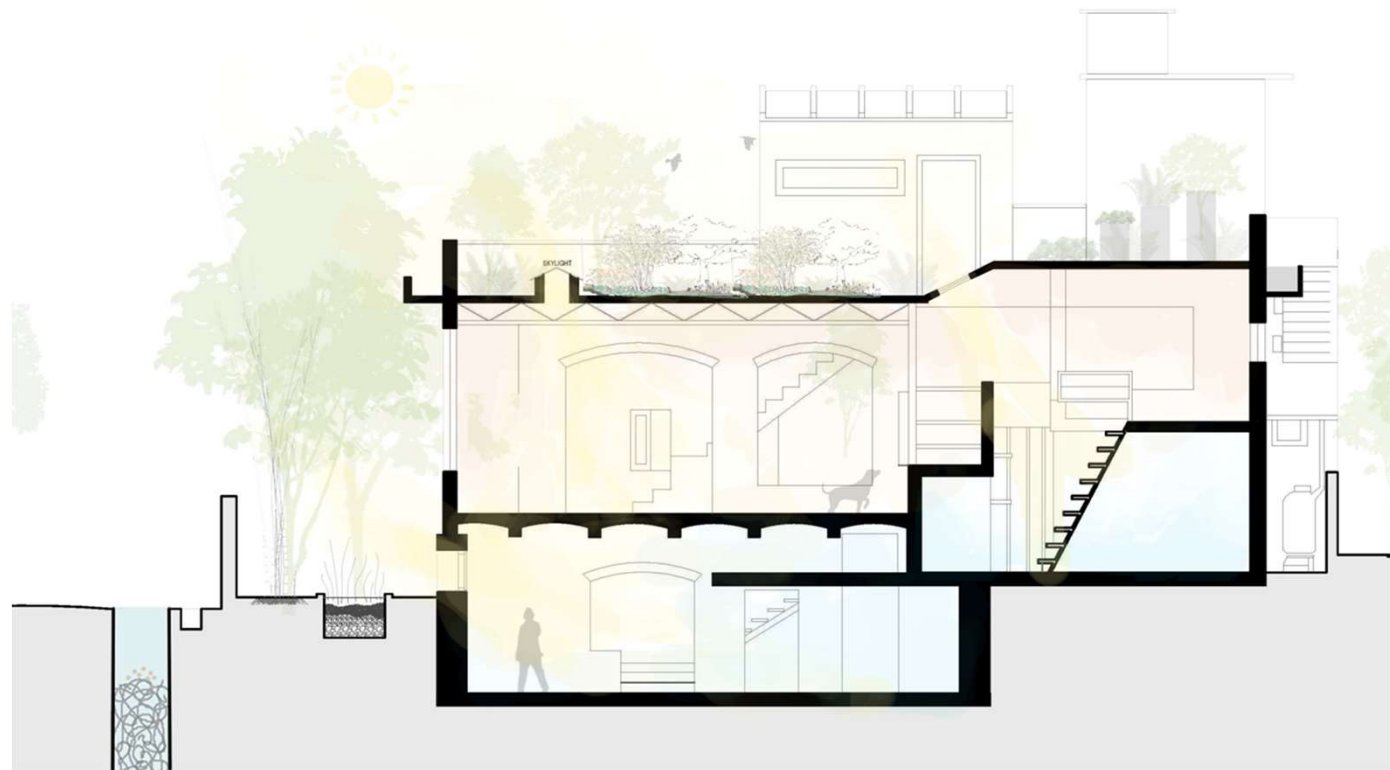


USING AVAILABLE MATERIALS

- EARTH

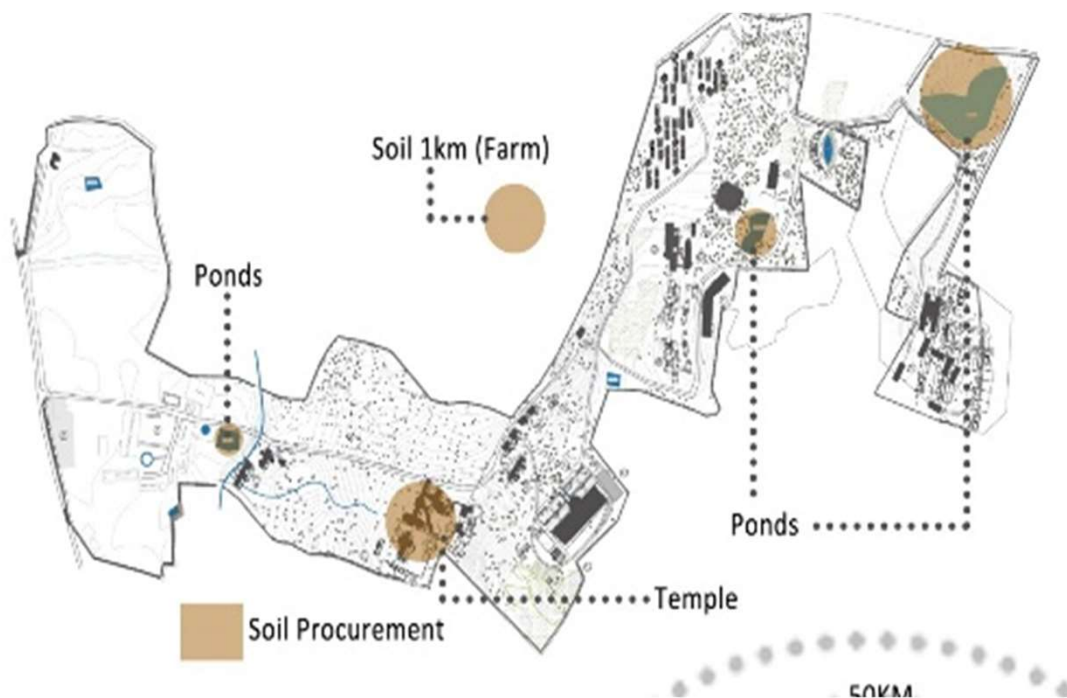
- POSSIBLE SOURCES OF EARTH-

1. BASEMENTS



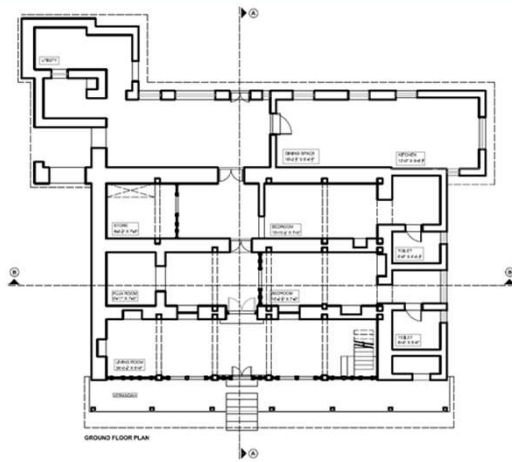
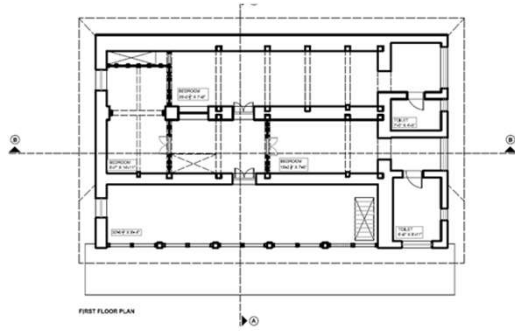


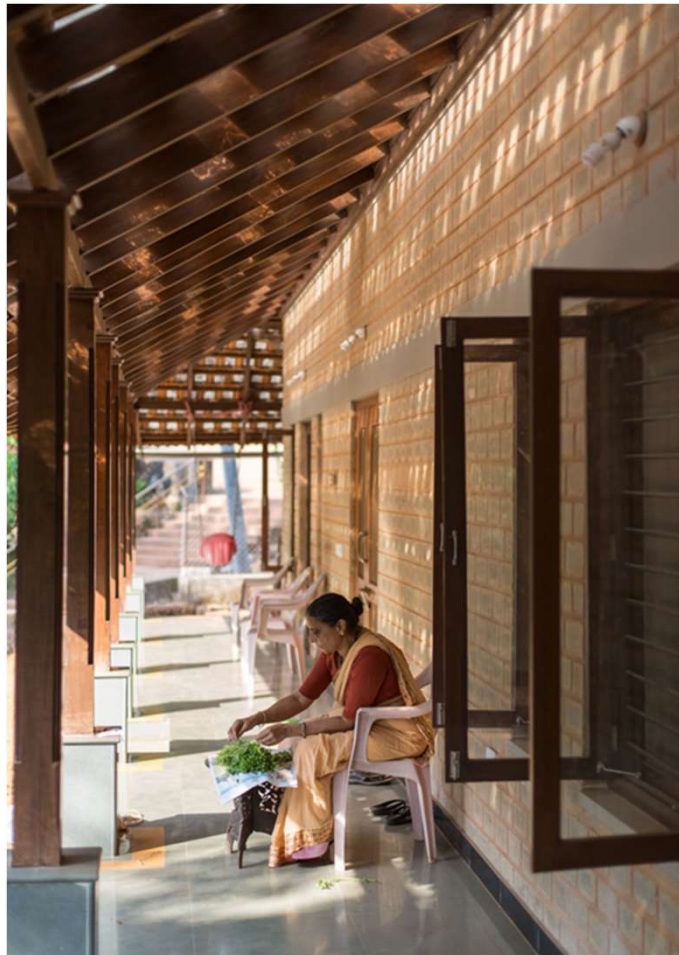
2. WATER BODIES





3. FROM EXISTING BUILDINGS

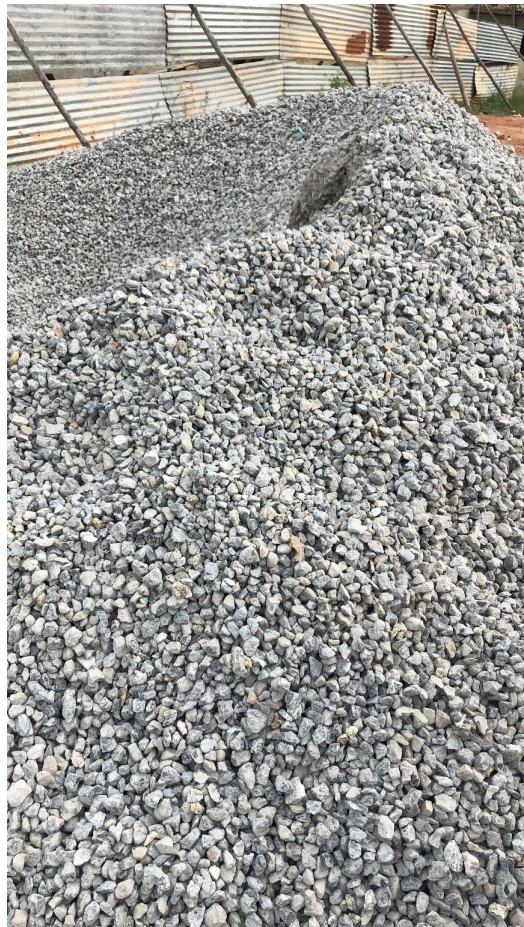




USING AVAILABLE MATERIALS

- CONSTRUCTION AND DEMOLITION WASTE







USING AVAILABLE MATERIALS

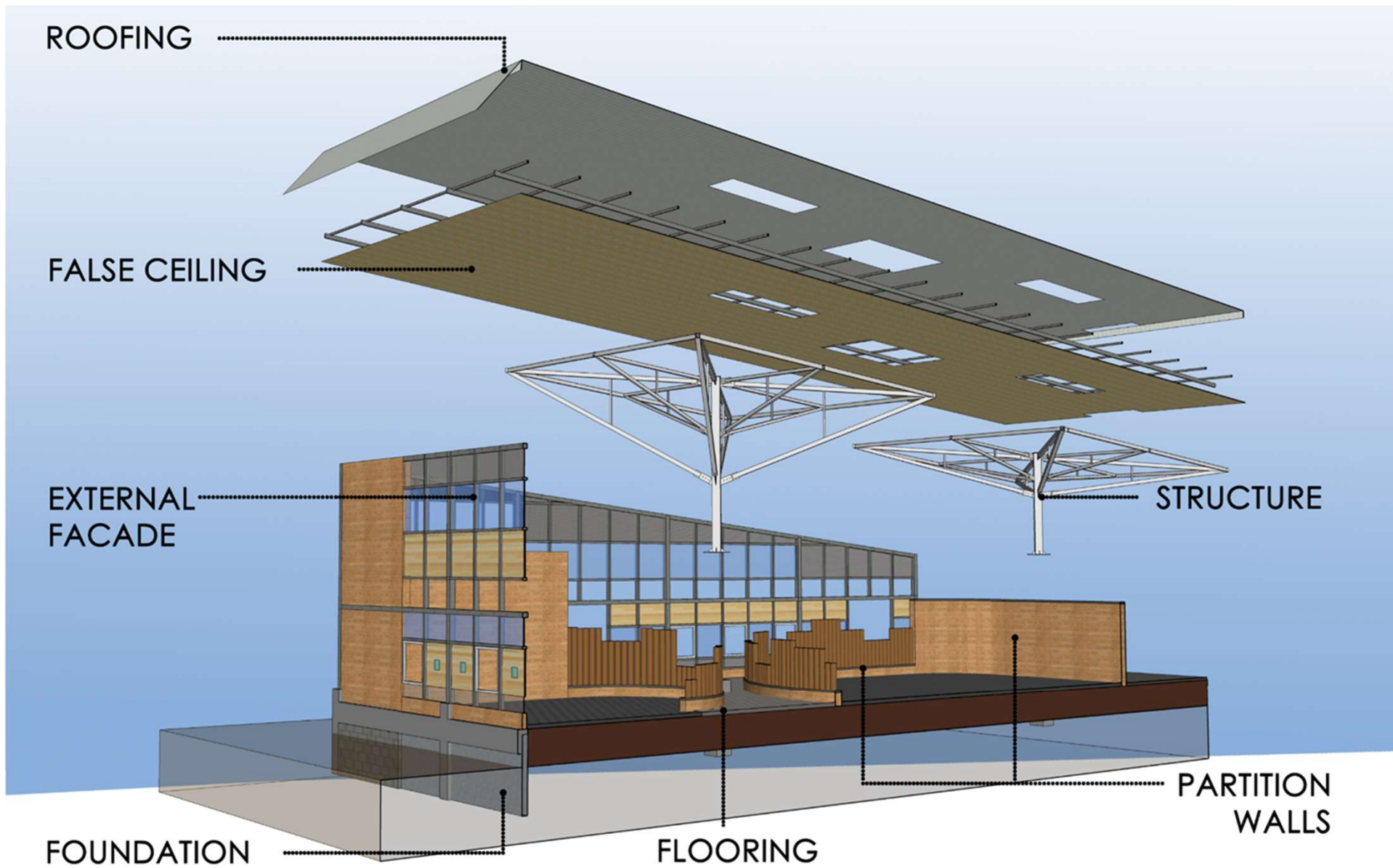
- USE OF WASTE











THANK YOU.
WWW.BIOME-SOLUTIONS.COM

