



MAHILA HOUSING SEWA TRUST

Dignified Home, Dignified Work, Dignified Life

Women in the resource efficiency conversation

2nd International Conference & Exhibition – Augmenting Nature by Green Affordable New-Habitat (ANGAN)

Siraz Hirani

*Senior Program Management Specialist
Mahila Housing Trust (MHT)*

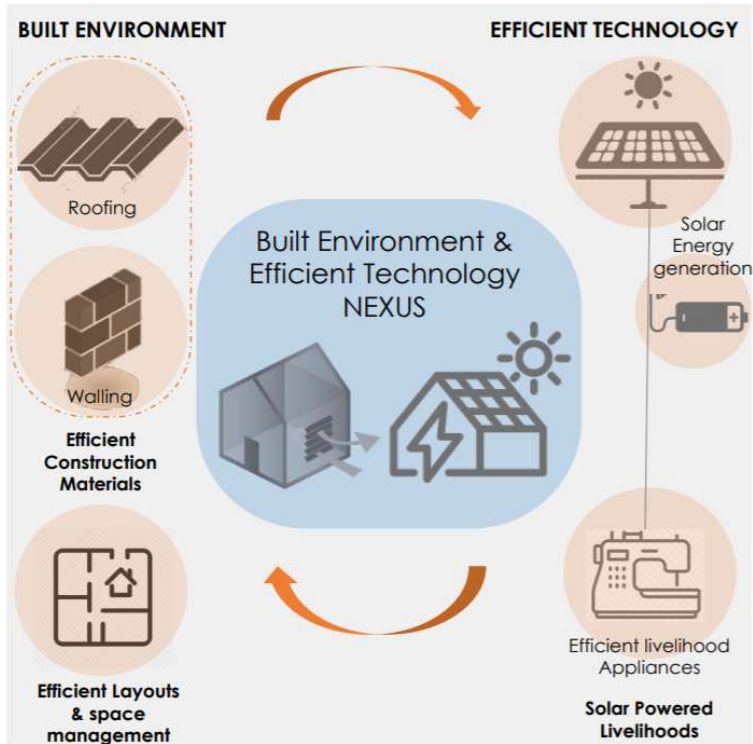


Focusing on women-led development, MHT contributes towards:



Strategy, Tactics & Outcomes

Strategy



Tactics

Innovate:

- Demonstrate successful model/pilot in built environment & efficient technology area

Replicate:

- Forging partnership with private sector & linking with financial institution for loans

Scale up:

- Evidence based advocacy with Government & other influencers to adapt tested successful technology

Influence:

- Policy advocacy with relevant government authority

Outcomes

New technical, financial & ownership model created

Evidence building for successful model

Eco-system designed to scale up through owner or market driven approach

Blue print for SDGs for different typologies

Built environment contributes 40% of GHG Emissions.

PRO POOR - CLIMATE RESILIENT SOLUTIONS MODROOF

INNOVATIVE ROOFING SOLUTION - CHARACTERISTICS

Manufacturer & Application

Pal Rematerials Private Limited in Ahmedabad,
Used as a **cooling solution for roofing material**

Thermal properties

Mod Roofs have been observed to reduce home temperatures **up to 6°C**.
Glossy white roof-top and Rockwool insulation for high thermal performance

Cost per unit

The product costs around **Rs. 750/- per square feet**.

Durability

ModRoof has a **15 year warranty** and can be transferred from one location to another and supports incrementality.

Ease of access

Available only on demand.



Good thermal properties



Quick & easy installation



Ecological alternative



Mechanically durable



No major maintenance



Fire and Weather retardant

SIGNIFICANT AND DIRECT ASSOCIATION WITH FINANCIAL INSTITUTION

A direct loan provided to households interested to change their roof to MOD Roof through MHT and Credit Co-operatives. **MHT has proposed a loan model ranging from Rs 30,000 to Rs 2,00,00.**



MOD Roof has been successful in enhancing its product through time contemplating the gaps in usability and constant change.



VOICES OF WOMEN

“

My name is Mina Soni. I live in Vishwasnagar since 15 years. Previously, We had a roof made of corrugated tin sheet. I work as a seamstress and live with my husband and two kids. Earlier it did not get this hot. But since these last years, the heat is intolerable. The second problem is that when it rains, my roof used to leak. Every monsoon season, I had to repair my roof. I have got to know about Mod roof in one of our Vikasini meetings in MHT. Few things I liked about this technology are its cost effectiveness and durability. Despite concrete roof being unaffordable to us, Mod roof looks like a pucca concrete roof. We could also take a loan and pay in instalments. Most importantly. We don't suffer from heat anymore. The company assured us that we can add a floor in the future.

**MINABEN,
VISHWASNAGAR, AHMEDABAD.**

PRO POOR - CLIMATE RESILIENT SOLUTIONS SOLAR REFLECTIVE WHITE PAINT

INNOVATIVE ROOFING SOLUTION - CHARACTERISTICS

Manufacturer & Application

Few common companies providing solar reflective white paints are **Kaycoat, Insultec, Nerolac etc.**

Thermal properties

Solar Reflective Paint reduce indoor temperatures **up to 4°C to 5°C.**

Exterior walls facing maximum sunlight to be painted for larger impact.

Cost per unit

The product costs around **Rs. 25/- per square feet.**
A roof of area 100 sq ft requires 8 litres of paint.

Durability

Solar paint is durable for **4 years without maintenance.**

Ease of access

Easily available in markets. Lime paint or Chuna are affordable alternatives.



Good thermal properties



Quick & easy installation



Ecological alternative



No major maintenance



Fire and Weather retardant

SIGNIFICANT AND DIRECT ASSOCIATION WITH FINANCIAL INSTITUTION

A direct financial and technical support has been provided to households interested to change their roof and are willing to apply the solar reflective white paint. **MHT through AWAAS and Credit Co-operatives has been promoting the pro poor and affordable technology** in various cities across India.



MHT in partnership the Ahmedabad Municipal Corporation has been part of the "Cool Roof Programme" under the Ahmedabad's Heat Action Plan. MHT's team painted around 250 roofs across the settlements with the help of the inhabitants.



VOICES OF WOMEN

//

Ever since we got our tin roof painted white, we've been able to save on electricity since the speed at which the fan rotates has also gone down because we don't feel so hot anymore. We are now able to work on our stitching in the afternoon from 2Pm to 5Pm and finish it on time because we feel at ease and cooler.

**MEENABEN KHORI,
RAMESHDUTT COLONY,
AHMEDABAD.**

Thank You

siraz@mahilahsg.org